

# Healthier Communities & Older People Overview & Scrutiny Panel - 2nd November 2021

Dr Dagmar Zeuner, Director of Public Health

Page 39

Merton Public Health Intelligence

2nd November 2021

Produced by Gary Forbes (gary.forbes@merton.gov.uk)



# Summary of COVID cases, testing, contact tracing, deaths, vaccinations and NHS figures

Domain	Indicator	Merton (previous value)	Merton change	London (previous value)	London Change
<b>Regional marker</b>	R value (7 <sup>th</sup> October)	-	-	0.9 – 1.1 (0.8 – 1.0)	↑
<b>Cases over last week</b> (7 <sup>th</sup> – 13 <sup>th</sup> Oct)	New cases	458 (450)	↑	20,984 (18,842)	↑
	7 day rate (per 100,000)	213.4 (209.6)	↑	234.1 (210.2)	↑
	Official 7-day rate (per 100,000)*	241.7 (273.7)	↓	213.8 (204.5)	↑
	7 day rate aged 60+ (per 100,000)	127.5 (72.0)	↑	-	-
	Cases identified as Kent variant	0.0% (0.0%)	→	0.01% (0.05%)	↓
	Cases suggestive of Delta variant (S-gene deletion) **	100% (100%)	→	99.8% (99.8%)	→
<b>PCR tests over 7 days</b> (5 <sup>th</sup> – 11 <sup>th</sup> Oct)	Daily rate (per 100,000)~	300.9 (244.0)	↑	260.7 (213.6)	↑
	Test positivity (Pillar 2 only) %~	10.9% (10.1%)	↑	10.9% (9.7%)	↑
	Test positivity (Pillar 1+2) %***	5.9% (5.5%)	↑	5.2% (4.7%)	↑
<b>Contact Tracing by NHS T&amp;T – cumulative</b> (2 <sup>nd</sup> Jun 2020 – 12 <sup>th</sup> October 2021)	% Cases completed	87% (87%)	→	86% (86%)	→
	% Contacts completed	93% (93%)	→	91% (91%)	→
<b>Outbreaks (6<sup>th</sup> – 12<sup>th</sup> October)</b>	Total number of outbreaks^	5 (5)	→	N/A	-
<b>Deaths (25<sup>th</sup> Sept – 1<sup>st</sup> Oct)</b>	Number COVID-19 registered deaths	1 (0)	↑	117 (78)	↑
<b>Vaccinations (as of 3<sup>rd</sup> Oct)****</b>	% 1 <sup>st</sup> COVID-19 vaccine dose (>50s)	81.5% (81.5%)	→	81.5% (81.4%)	↑
Domain	Indicator	SWL (previous value)	SWL change	London (previous value)	London Change
<b>Current inpatients</b> (as of 14 <sup>th</sup> October)	COVID inpatients~	N/A (164)	-	849 (884)	↓
	COVID patients in mechanical ventilator beds	N/A (21)	-	143 (161)	↓

\* The official PHE rate for Merton and London are for the week **ending** the 7<sup>th</sup> October.

\*\*Date of specimen: 17<sup>th</sup> September – 7<sup>th</sup> October; as extracted on 11<sup>th</sup> October for London and 14<sup>th</sup> October for Merton for all (confirmed and provisional) cases

\*\*\*Test positivity refers to the percent of total tests that were positive, even if individuals had multiple tests.

\*\*\*\*Denominator based on NIMS populations

~New data source used so numbers may change

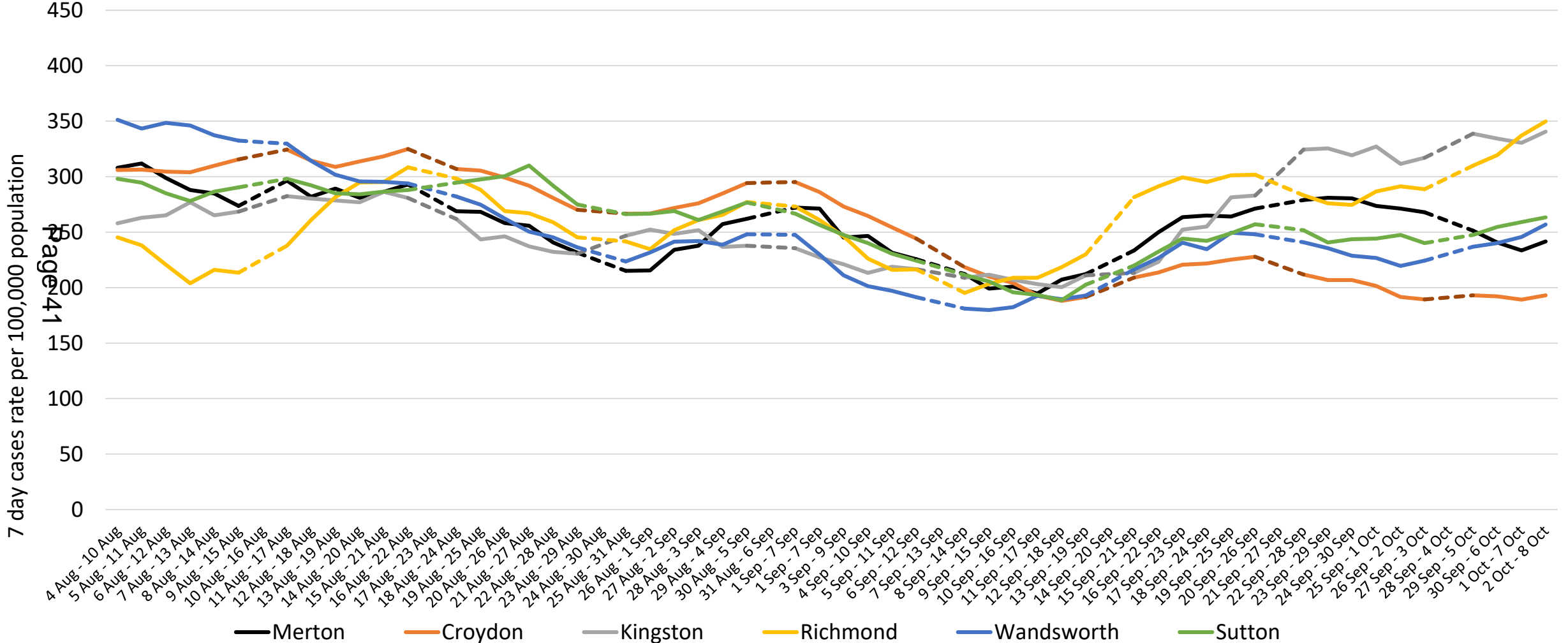
^The majority of outbreaks occurred in school settings

# Rolling total rate of confirmed positive cases per 100,000 population in Merton per week compared to South West London boroughs (Pillar 1 & 2)

Source: London Covid 19 daily surveillance report

Reporting frequency: Daily

**Key message:** Merton has the 2<sup>nd</sup> lowest rate in SWL boroughs



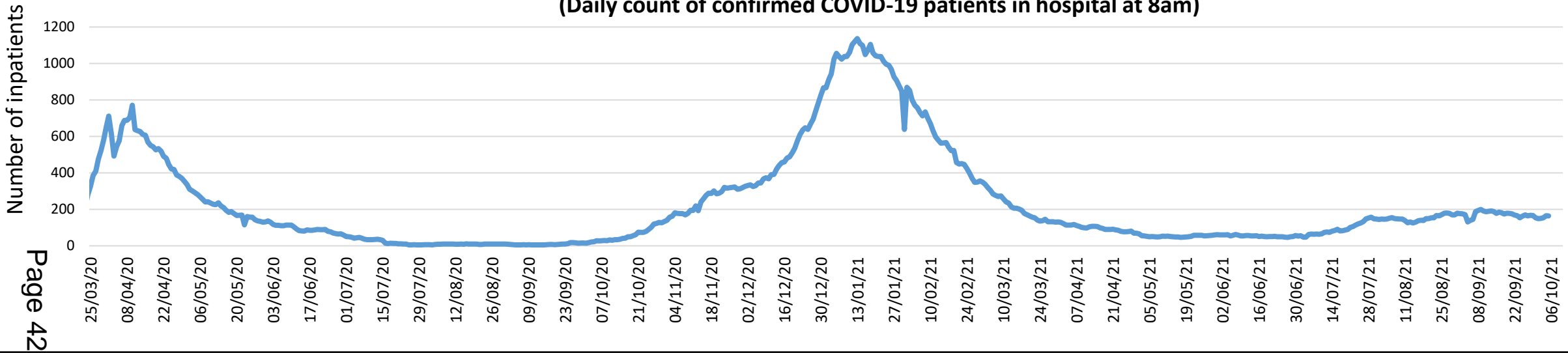
Please note there are reporting gaps; the dotted lines refers to periods when data was not available.

# COVID-19 NHS-related indicators for Southwest London

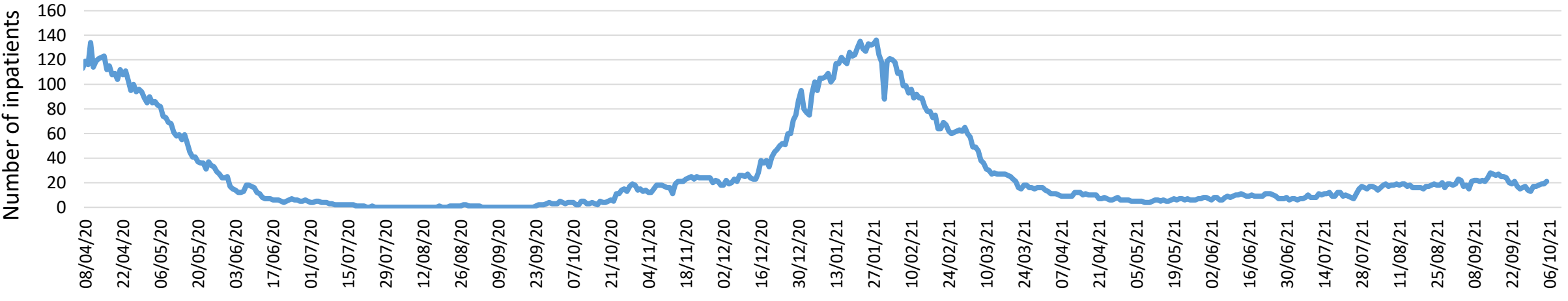
UPDATED DATA NOT AVAILABLE THIS WEEK

## Confirmed COVID-19 inpatients in Southwest London NHS trust hospitals

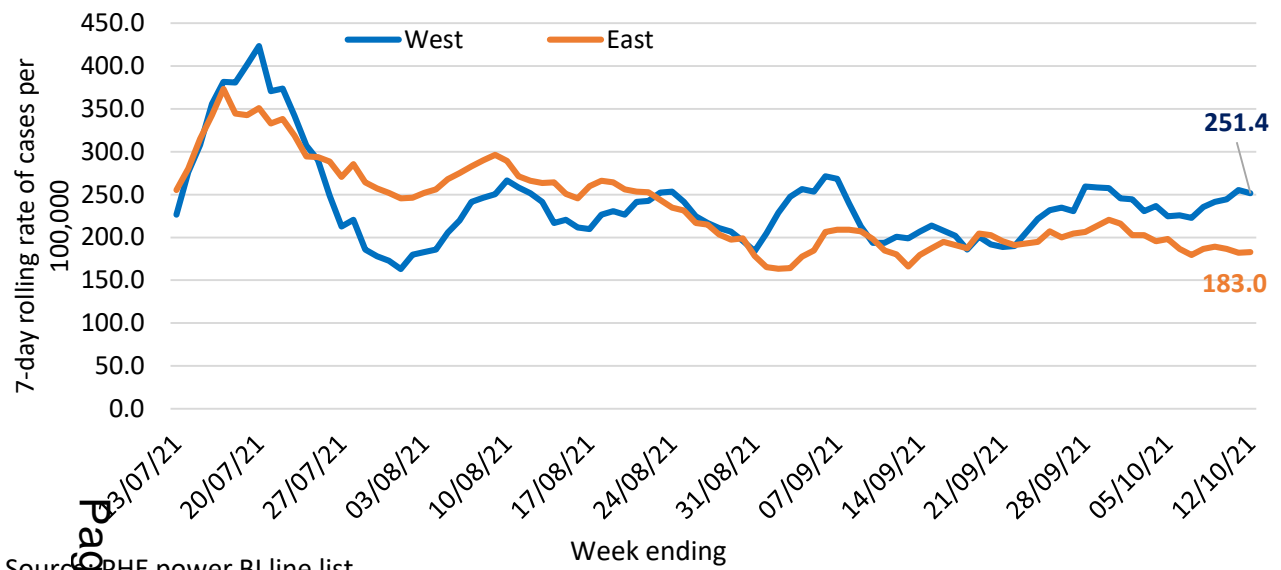
(Daily count of confirmed COVID-19 patients in hospital at 8am)



## Confirmed COVID-19 inpatients in mechanical ventilator beds in Southwest London NHS trusts

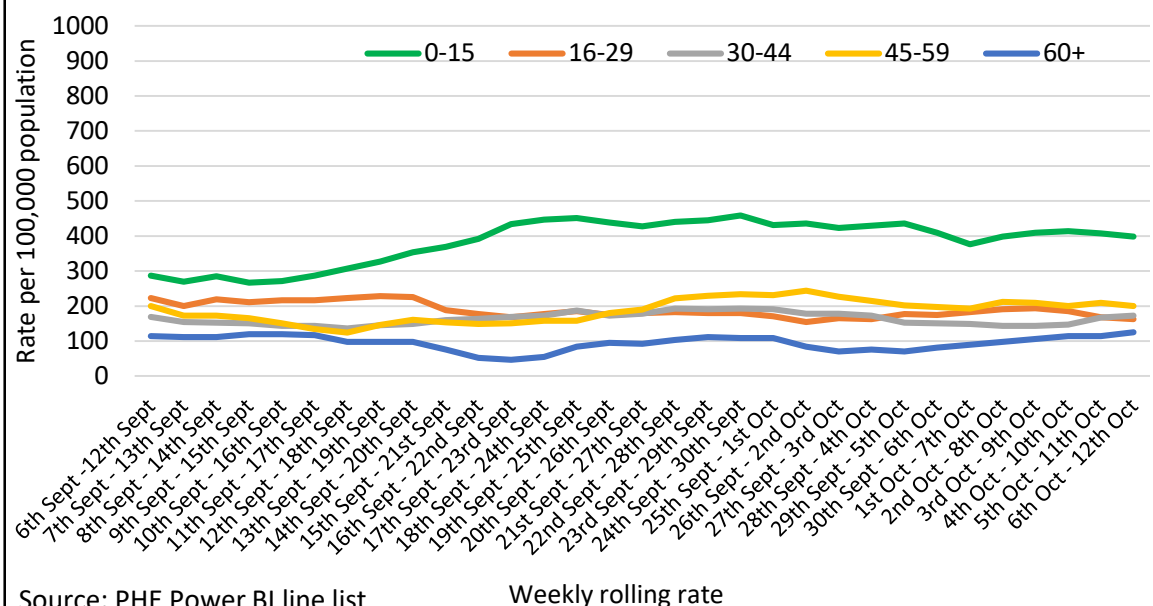


## 7-day rolling Pillar 1 and 2 COVID-19 case rates per 100,000 residents in East and West Merton



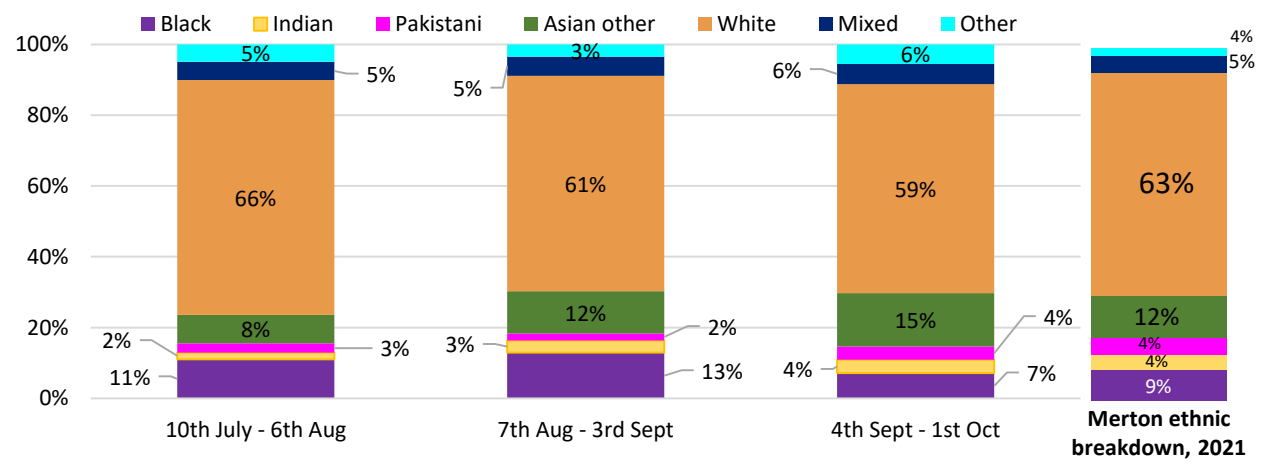
Source: PHE power BI line list

## 7 day rolling rate Pillar 2 case rates in Merton residents by age groups



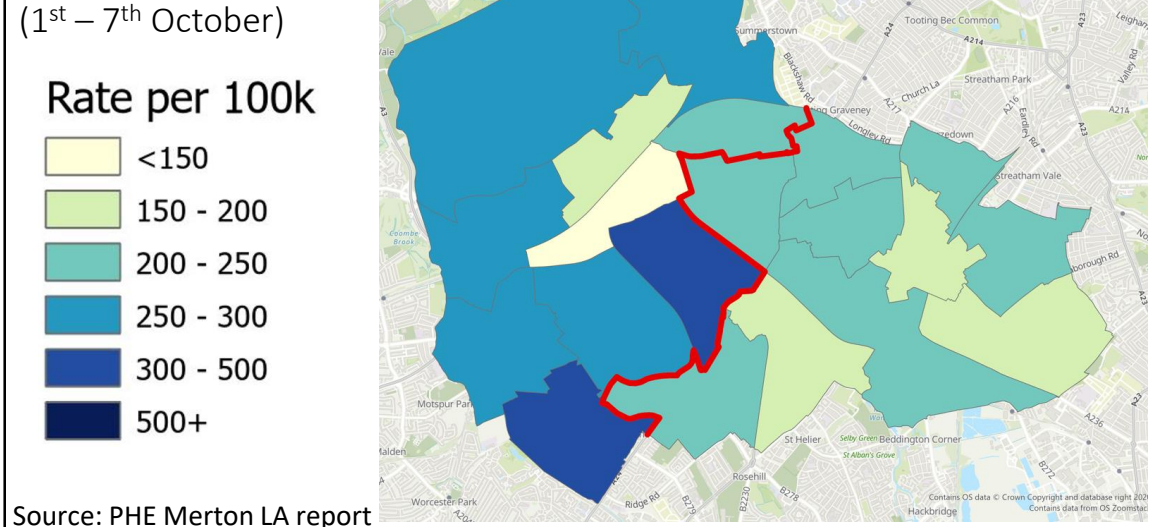
Source: PHE Power BI line list

## Pillar 2 COVID-19 cases in Merton residents - by ethnicity compared to Merton ethnic profile over 4 week periods\* (10th July – 1st October)



Source: PHE Power BI and GLA populations

## Pillar 1 and 2 COVID-19 cases in Merton residents by ward over one week (1st – 7th October)



Source: PHE Merton LA report

# Summary key messages

CHARTS UPDATED NO UPDATE FOR TEXT THIS WEEK

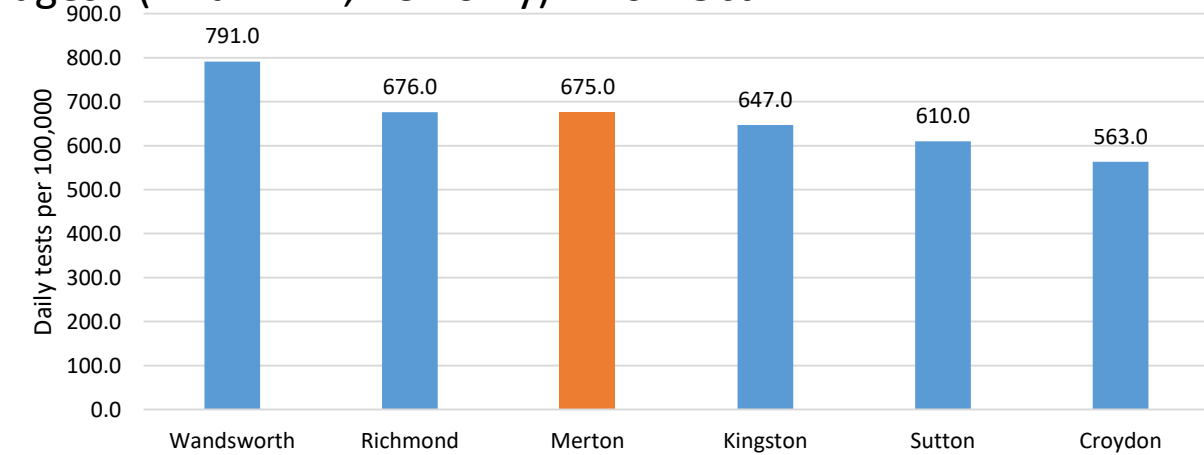
## Merton residents overview (27<sup>th</sup> Sept– 3<sup>rd</sup> Oct)

- Merton completed **14,033** Pillar 2 LFDs for the week ending 3<sup>rd</sup> October , across all settings.
- Merton completed **6,544.2** Pillar 2 LFD tests per 100,000 population for the week ending 3<sup>rd</sup> October . This is 3<sup>rd</sup> lowest among SWL boroughs.
- Of LFDs completed in Merton, **1.0%** (147 tests) were positive. During the same period, **10.7%** (523 tests) of Merton PCR tests were positive.
- Among all 670 positive tests , **523 (78.1%)** were captured by PCR testing, and **147 (21.9%)** were captured by LFD testing.
- Merton ordered 1,073 home testing kits (week ending 3<sup>rd</sup> Oct).

## London overview (27<sup>th</sup> Sept– 3<sup>rd</sup> Oct)

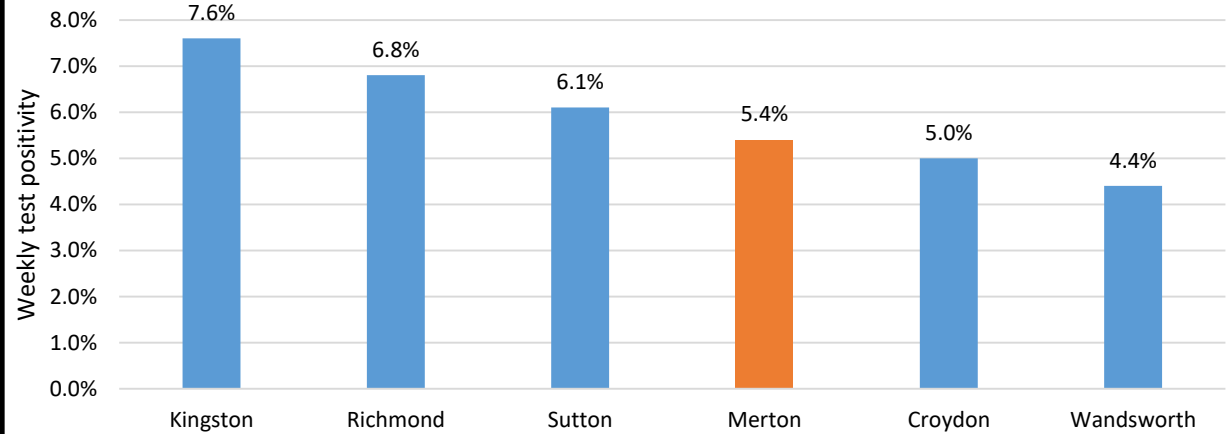
- London completed **520,061** LFDs for the week ending 3<sup>rd</sup> October (across all settings). 5,061 of these were positive (**1.0%**).

Daily tests per 100,000 population 7-day moving average all ages - (Pillar 1 +2, PCR only) – 10<sup>th</sup> Oct



Source: UKHSA Regional SAR

Weekly percentage of individuals tested positive – all ages (Pillar 1 + 2, PCR only) - 10<sup>th</sup> Oct



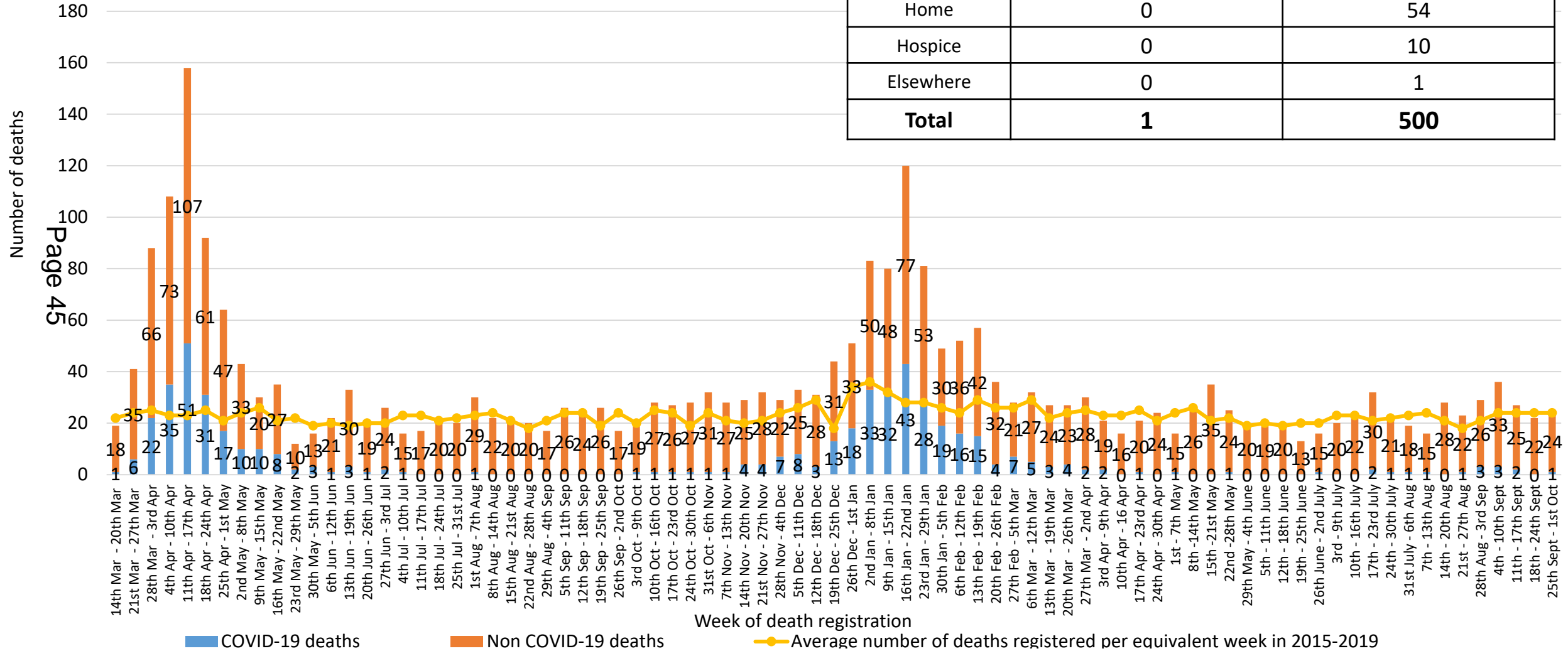
Source: UKHSA Regional SAR

# Number of deaths of Merton Residents by week of registration

2<sup>nd</sup> November 2021

Source: ONS

Reporting frequency: Weekly

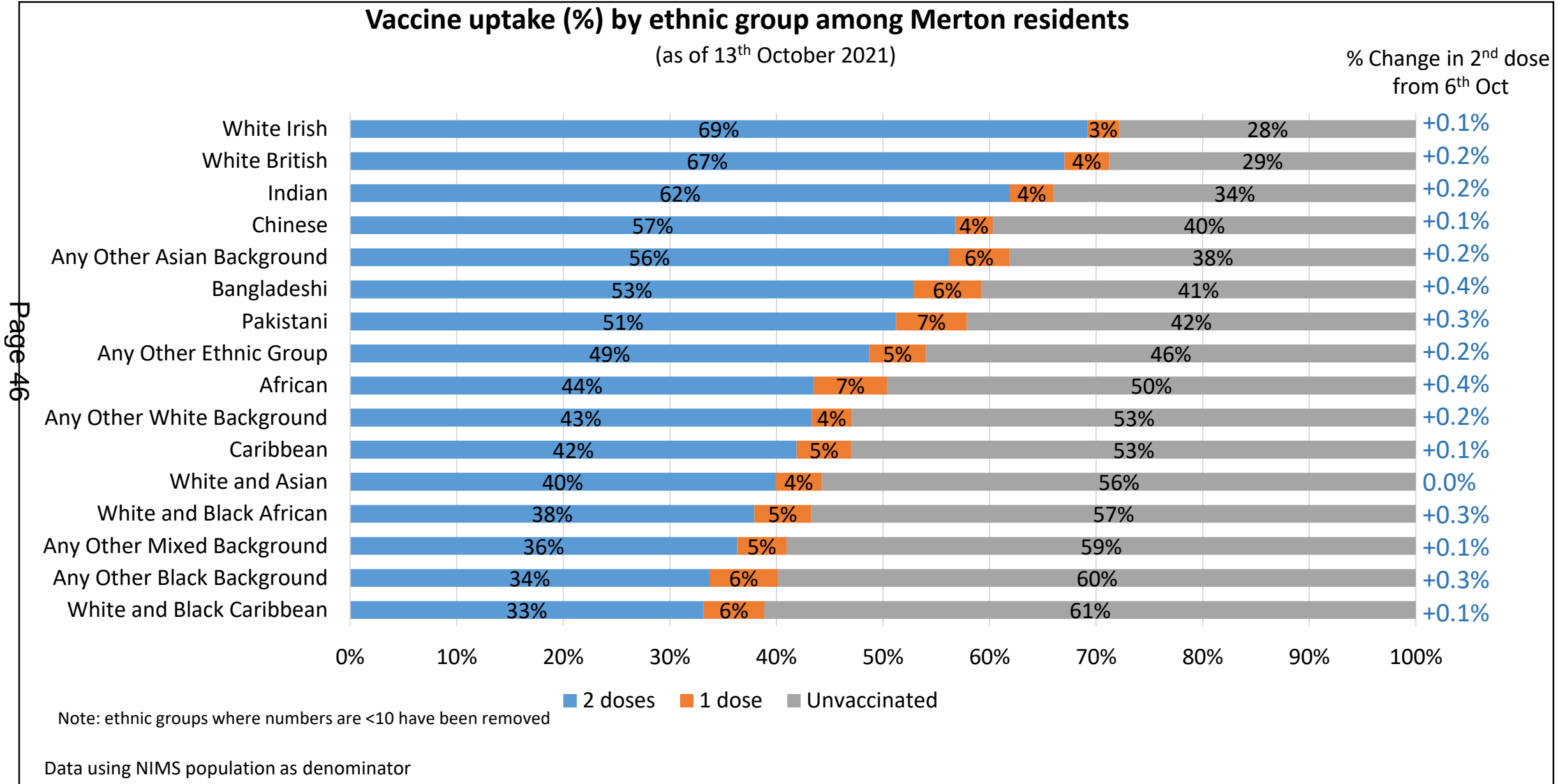


Place of death	COVID deaths latest available week (25.09.21 – 01.10.21)	Cumulative COVID deaths (04.01.20 – 01.10.21)
Hospital	1	386
Care home	0	49
Home	0	54
Hospice	0	10
Elsewhere	0	1
<b>Total</b>	<b>1</b>	<b>500</b>

# Vaccine uptake by ethnic group among Merton residents

2<sup>nd</sup> November 2021

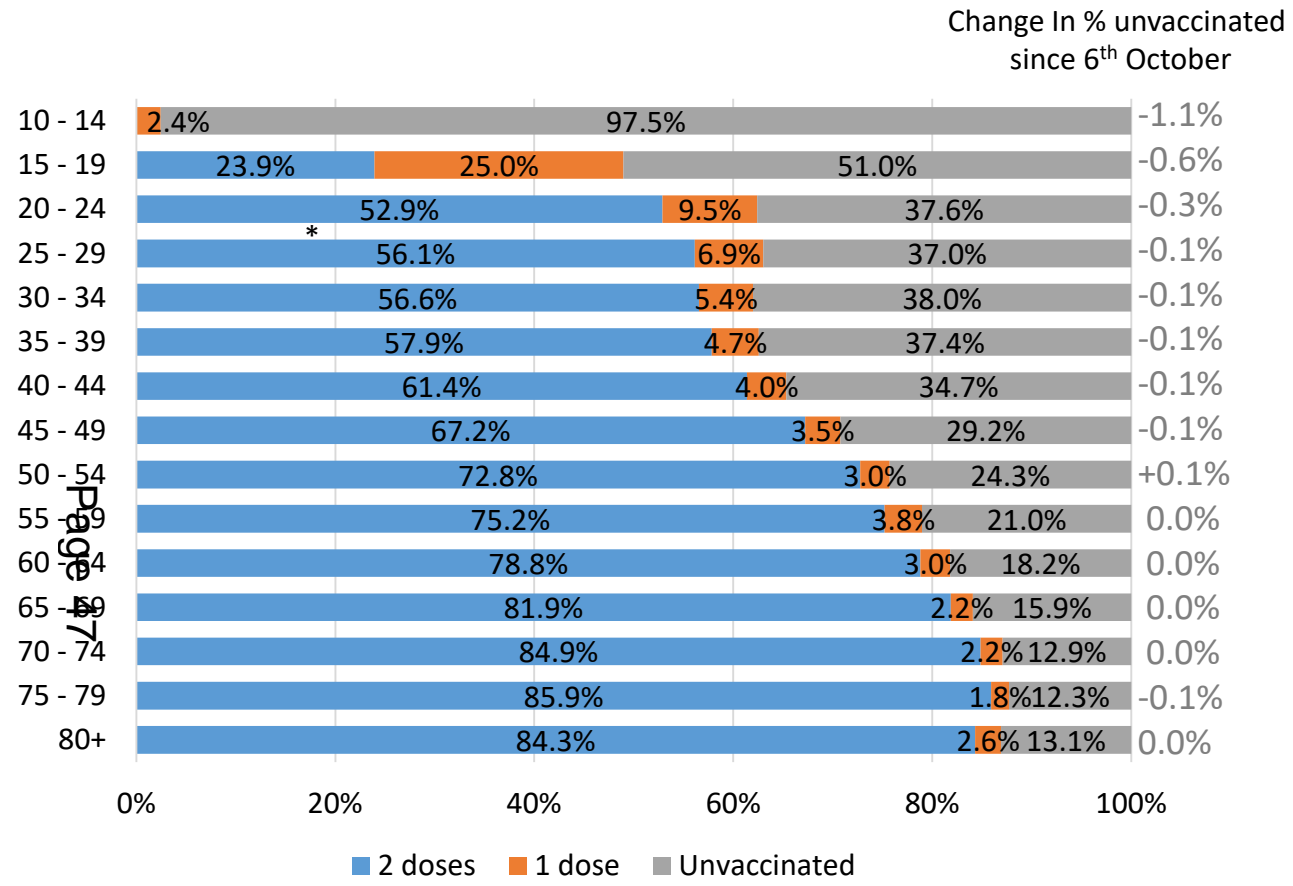
Data as of 13<sup>th</sup> October 2021



Page 46

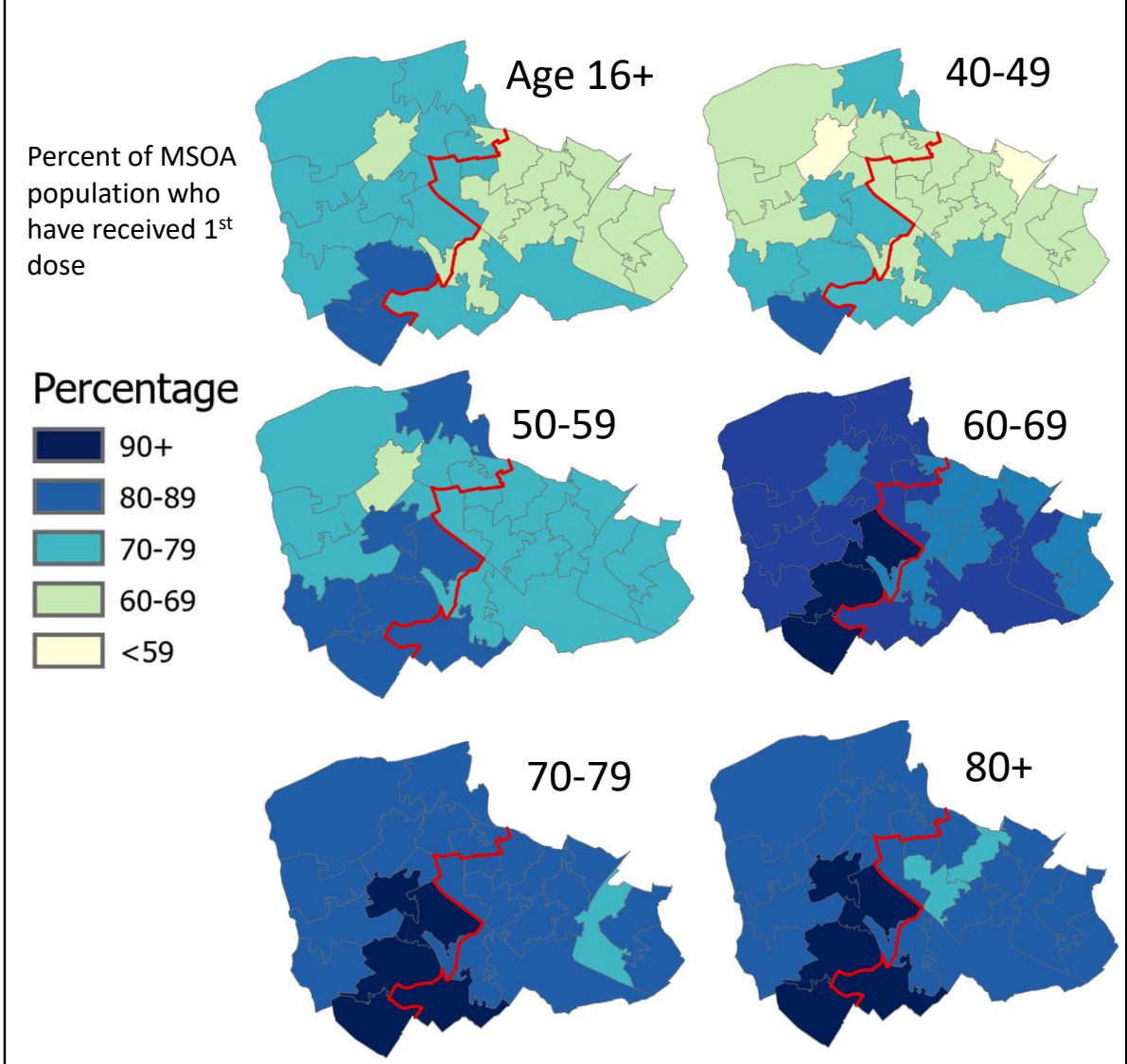


## Vaccine uptake by age band among Merton residents (as of 13<sup>th</sup> October 2021)



Data using NIMS population as denominator  
Source: PHE power BI

## Percentage of Merton residents by age group and MSOA that have received 1<sup>st</sup> dose of Covid-19 vaccination (as of 3<sup>rd</sup> October)



Source: NHS COVID-19 vaccinations weekly report 7<sup>th</sup> October

This page is intentionally left blank